
Product Datasheet

HLA-DPB1 Antibody (MHC II) (orb606899)

Description

Recognizes a non-polymorphic determinant of DP-

transmembrane...

Species/Host

Rabbit

Reactivity

Human

Conjugation

Unconjugated

Tested Applications

ELISA, FACS, IF

Immunogen

Non-T, non-B human acute lymphoblastic leukemia REH6 cell line was used as the immunogen for the recombinant HLA-DPB1 antibody.

Preservatives

0.2 mg/ml in 1X PBS with 0.1 mg/ml rAlbumin (US sourced) and 0.05% sodium azide

Storage

Store the recombinant HLA-DPB1 antibody at 2-8°C (with azide) or aliquot and store at -20°C or colder (without azide).

Note

For research use only

Application notes

Optimal dilution of the recombinant HLA-DPB1 antibody should be determined by the researcher.

Formula

0.2 mg/ml in 1X PBS with 0.1 mg/ml BSA (US sourced) and 0.05% sodium azide

Isotype

Rabbit IgG, kappa

Clonality

Recombinant

Purity

Protein A affinity chromatography

Uniprot ID

P04440

Hazard Information

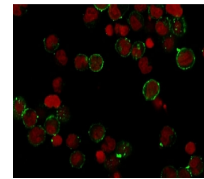
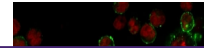
This recombinant HLA-DPB1 antibody is available for research use only.

Dilution Range

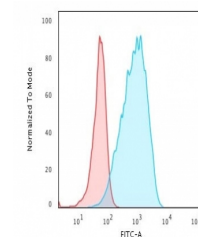
ELISA: 2-4ug/ml for coating (order BSA/sodium azide-free format), Flow cytometry: 1-2ug/million cells, Immunofluorescence: 1-2ug/ml

Expiration Date

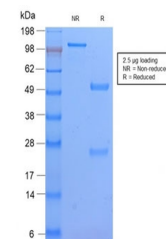
12 months from date of receipt.



Immunofluorescent staining of human Raji...



Flow cytometry testing of human Raji cel...



SDS-PAGE analysis of purified, BSA-free ...