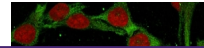

Product Datasheet

GSTM2 Antibody / Glutathione S-Transferase mu 2 (orb606896)

Description

Members of the glutathione S-transferase (GST)


Species/Host

Mouse

Reactivity

Human

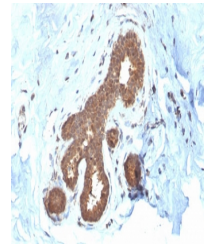
Conjugation

Unconjugated

Tested Applications

FACS, IF, IHC-P, WB

Immunofluorescent staining of fixed and ...



IHC staining of FFPE human placental tis...

Immunogen

Full length recombinant human protein was used as the immunogen for this GSTM2 antibody.

Preservatives

0.2 mg/ml in 1X PBS with 0.1 mg/ml rAlbumin (US sourced) and 0.05% sodium azide

Storage

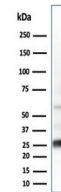
Store the GSTM2 antibody at 2-8°C (with azide) or aliquot and store at -20°C or colder (without azide).

Note

For research use only

Application notes

Optimal dilution of the GSTM2 antibody should be determined by the researcher.1. The prediluted format is supplied in a dropper bottle and is optimized for use in IHC. After epitope retrieval step (if required), drip mAb solution onto the tissue section and incubate at RT for 30 min.



Western blot testing of human liver lysa...

Formula

0.2 mg/ml in 1X PBS with 0.1 mg/ml BSA (US sourced) and 0.05% sodium azide

Isotype

Mouse IgG1, kappa

Clonality

Monoclonal

Purity

Protein G affinity chromatography

Uniprot ID

P28161

Hazard Information

This GSTM2 antibody is available for research use only.

Dilution Range

Flow cytometry: 1-2ug/million cells, Immunofluorescence: 1-2ug/ml, Immunohistochemistry (FFPE): 0.5-1ug/ml for 30 min at RT, Western blot: 1-2ug/ml

Expiration Date

12 months from date of receipt.