

---

## Product Datasheet

**Glycoprotein 2 Antibody / GP2 / ZAP75  
(orb606895)**

**Description**

GP2 (Glycoprotein 2), also known as ZAP75, is a 537


**Species/Host**

Rabbit

**Reactivity**

Human

**Conjugation**

Unconjugated

**Tested Applications**

ELISA, IHC-P, WB

**Immunogen**

A partial human recombinant protein corresponding to amino acids 35-179 was used as the immunogen for the recombinant GP2 antibody.

**Preservatives**

0.2 mg/ml in 1X PBS with 0.1 mg/ml rAlbumin (US sourced) and 0.05% sodium azide

**Storage**

Store the recombinant GP2 antibody at 2-8°C (with azide) or aliquot and store at -20°C or colder (without azide).

**Note**

For research use only

**Application notes**

Optimal dilution of the recombinant GP2 antibody should be determined by the researcher.1. The prediluted format is supplied in a dropper bottle and is optimized for use in IHC. After epitope retrieval step (if required), drip mAb solution onto the tissue section and incubate at RT for 30 min.

**Formula**

0.2 mg/ml in 1X PBS with 0.1 mg/ml BSA (US sourced) and 0.05% sodium azide

**Isotype**

Rabbit IgG, kappa

**Clonality**

Recombinant

**Purity**

Protein A affinity chromatography

**Uniprot ID**

**P55259**

**Hazard Information**

This recombinant GP2 antibody is available for research use only.

**Dilution Range**

ELISA: 2-4ug/ml (order BSA/azide-free format), Western blot: 1-2ug/ml, Immunohistochemistry (FFPE): 1-2ug/ml for 30 min at RT

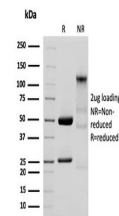
**Expiration Date**

12 months from date of receipt.

IHC testing of FFPE human pancreas with ...



Western blot testing of human pancreas I...



SDS-PAGE analysis of purified, BSA-free ...