

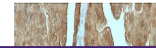
---

## Product Datasheet

### GLO1 Antibody / Glyoxalase I (orb606894)

**Description**

GLO1 is an enzyme involved in the detoxification of


**Species/Host**

Mouse

**Reactivity**

Human

**Conjugation**

Unconjugated

**Tested Applications**

IHC-P, WB

**Immunogen**

Full length human protein was used as the immunogen for the GLO1 antibody.

**Preservatives**

0.2 mg/ml in 1X PBS with 0.1 mg/ml rAlbumin (US sourced) and 0.05% sodium azide

**Storage**

Store the GLO1 antibody at 2-8°C (with azide) or aliquot and store at -20°C or colder (without azide).

**Note**

For research use only

**Application notes**

Optimal dilution of the GLO1 antibody should be determined by the researcher.1. The prediluted format is supplied in a dropper bottle and is optimized for use in IHC. After epitope retrieval step (if required), drip mAb solution onto the tissue section and incubate at RT for 30 min.

**Formula**

0.2 mg/ml in 1X PBS with 0.1 mg/ml BSA (US sourced) and 0.05% sodium azide

**Isotype**

Mouse IgG1, kappa

**Clonality**

Monoclonal

**Purity**

Protein G affinity chromatography

**Uniprot ID**

[Q04760](#)

**Hazard Information**

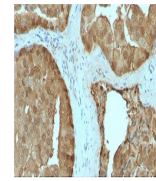
This GLO1 antibody is available for research use only.

**Dilution Range**

Western blot: 0.5-1ug/ml, Immunohistochemistry (FFPE): 0.5-1ug/ml for 30 min at RT

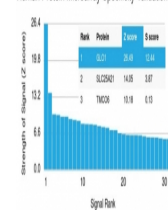
**Expiration Date**

12 months from date of receipt.

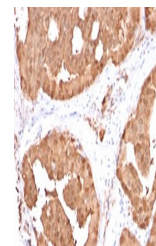


IHC testing of FFPE human prostate carcinoma...

Human Protein Microarray Specificity Validation



Analysis of HuProt (TM) microarray containing...



IHC testing of FFPE human prostate carcinoma...