
Product Datasheet

Basic Cytokeratin Antibody (HMW / Type II) (orb606884)

Description

This MAb recognizes basic (Type II or HMW)

(CK3); 59k...

Species/Host

Mouse

Reactivity

Human

Conjugation

Unconjugated

Tested

IHC-P

Applications
Immunogen

Solubilized cytokeratin extract from human stratum corneum was used as the immunogen.

Preservatives

0.2 mg/ml in 1X PBS with 0.1 mg/ml rAlbumin (US sourced) and 0.05% sodium azide

Storage

Store the Basic Cytokeratin antibody at 2-8°C (with azide) or aliquot and store at -20°C or colder (without azide).

Note

For research use only

Application notes

Differences in protocols and secondaries may cause the Basic Cytokeratin antibody to need titering for optimal performance.1. The prediluted format is supplied in a dropper bottle and is optimized for use in IHC. After epitope retrieval step (if required), drip mAb solution onto the tissue section and incubate at RT for 30 min.

Formula

0.2 mg/ml in 1X PBS with 0.1 mg/ml BSA (US sourced) and 0.05% sodium azide

Isotype

Mouse IgG1

Clonality

Monoclonal

Purity

Protein G purified

Uniprot ID

[Q01546](#)

Hazard
Information

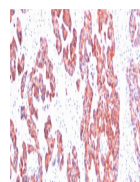
This Basic Cytokeratin antibody is available for research use only.

Dilution Range

Immunohistochemistry (FFPE): 1-2ug/ml for 30 min at RT, Prediluted IHC only format: incubate for 30 min at RT (1)

Expiration Date

12 months from date of receipt.



IHC staining of FFPE human breast carcin...