
Product Datasheet

Melanoma Cell Marker Antibody Cocktail (anti-MART-1 + gp100 + Tyrosinase) (orb606882)

Description

This antibody cocktail recognizes three


Species/Host

Mouse

Reactivity

Human

Conjugation

Unconjugated

Tested Applications

IHC-P, WB

Immunogen

Recombinant MART-1 protein (A103), recombinant tyrosinase protein (T311) and extract of pigmented melanoma metastases from lymph nodes (HMB45) were used as the immunogens for this Melanoma Marker antibody cocktail.

Preservatives

0.2 mg/ml in 1X PBS with 0.1 mg/ml rAlbumin (US sourced) and 0.05% sodium azide

Storage

Store the Melanoma Cell Marker antibody cocktail at 2-8°C (with azide) or aliquot and store at -20°C or colder (without azide).

Note

For research use only

Application notes

The optimal dilution of the Melanoma Marker antibody for each application should be determined by the researcher.1. The prediluted format is supplied in a dropper bottle and is optimized for use in IHC. After epitope retrieval step (if required), drip mAb solution onto the tissue section and incubate at RT for 30 min.

Formula

0.2 mg/ml in 1X PBS with 0.1 mg/ml BSA (US sourced) and 0.05% sodium azide

Isotype

Mouse IgG1/IgG2a

Clonality

Monoclonal

Purity

Protein G affinity chromatography

Uniprot ID

P40967, Q16655, P14679

Hazard Information

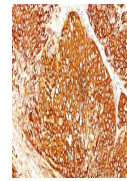
This Melanoma Marker antibody cocktail is available for research use only.

Dilution Range

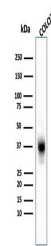
Immunohistochemistry (FFPE): 1-2ug/ml for 30 min at RT,Western blot: 1-2ug/ml

Expiration Date

12 months from date of receipt.



IHC staining of FFPE human melanoma with...



Western blot testing of human COLO-38 ce...