
Product Datasheet

CD68 Antibody (orb606879)

Description

This antibody recognizes a glycoprotein of 110kDa, which is


Species/Host

Rabbit

Reactivity

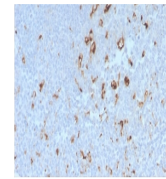
Human

Conjugation

Unconjugated

Tested Applications

IHC-P, WB



IHC staining of FFPE human tonsil with r...

Immunogen

Full length recombinant human protein was used as the immunogen for the recombinant CD68 antibody.

Preservatives

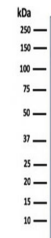
0.2 mg/ml in 1X PBS with 0.1 mg/ml rAlbumin (US sourced) and 0.05% sodium azide

Storage

Store the recombinant CD68 antibody at 2-8°C (with azide) or aliquot and store at -20°C or colder (without azide).

Note

For research use only



Western blot testing of human spleen lys...

Application notes

Optimal dilution of the recombinant CD68 antibody should be determined by the researcher.1. The prediluted format is supplied in a dropper bottle and is optimized for use in IHC. After epitope retrieval step (if required), drip mAb solution onto the tissue section and incubate at RT for 30 min.

Formula

0.2 mg/ml in 1X PBS with 0.1 mg/ml BSA (US sourced) and 0.05% sodium azide

Isotype

Rabbit IgG, kappa

Clonality

Recombinant

Purity

Protein A affinity chromatography

Uniprot ID

P34810

Hazard Information

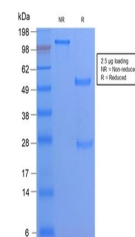
This recombinant CD68 antibody is available for research use only.

Dilution Range

Western blot: 1-2ug/ml, Immunohistochemistry (FFPE): 1-2ug/ml for 30 min at RT

Expiration Date

12 months from date of receipt.



SDS-PAGE analysis of purified, BSA-free ...