
Product Datasheet

CD40L Antibody / TRAP / CD154 (orb606874)

Description

CD40LG expression is mainly confined to the CD4-


Species/Host

Mouse

Reactivity

Human

Conjugation

Unconjugated

Tested Applications

ELISA, FACS, IF, IHC-P

Immunogen

A portion of amino acids 108-261 from the human protein was used as the immunogen for the CD40 Ligand antibody.

Preservatives

0.2 mg/ml in 1X PBS with 0.1 mg/ml rAlbumin (US sourced) and 0.05% sodium azide

Storage

Store the CD40 Ligand antibody at 2-8°C (with azide) or aliquot and store at -20°C or colder (without azide).

Note

For research use only

Application notes

Optimal dilution of the CD40 Ligand antibody should be determined by the researcher. 1. The prediluted format is supplied in a dropper bottle and is optimized for use in IHC. After epitope retrieval step (if required), drip mAb solution onto the tissue section and incubate at RT for 30 min.

Formula

0.2 mg/ml in 1X PBS with 0.1 mg/ml BSA (US sourced) and 0.05% sodium azide

Isotype

Mouse IgG2b, kappa

Clonality

Monoclonal

Purity

Protein G affinity chromatography

Uniprot ID

P29965

Hazard Information

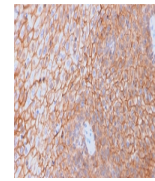
This CD40 Ligand antibody is available for research use only.

Dilution Range

ELISA (order BSA/sodium azide-free format for coating), Flow cytometry: 1-2ug/million cells, Immunofluorescence: 1-2ug/ml, Immunohistochemistry (FFPE): 1-2ug/ml for 30 min at RT

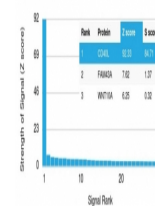
Expiration Date

12 months from date of receipt.

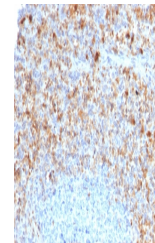


IHC testing of FFPE human spleen with CD...

Human Protein Microarray Specificity Validation



Analysis of HuProt (TM) microarray conta...



IHC testing of FFPE human spleen with CD...