

Product Datasheet

BAP1 Antibody / BRCA1-Associated Protein 1 (orb606862)

Description

The BAP1 gene belongs to the ubiquitin C-terminal

Human Protein Microarray Specificity Validation

t...

Species/Host

Mouse

Reactivity

Human

Conjugation

Unconjugated

Tested Applications

ELISA

Immunogen

A portion of amino acids 191-326 from the human protein was used as the immunogen for the BAP1 antibody.

Preservatives

0.2 mg/ml in 1X PBS with 0.1 mg/ml rAlbumin (US sourced) and 0.05% sodium azide

Storage

Store the BAP1 antibody at 2-8°C (with azide) or aliquot and store at -20°C or colder (without azide).

Note

For research use only

Application notes

Optimal dilution of the BAP1 antibody to be determined by the researcher.

Formula

0.2 mg/ml in 1X PBS with 0.1 mg/ml BSA (US sourced) and 0.05% sodium azide

Isotype

Mouse IgG2c, kappa

Clonality

Monoclonal

Purity

Protein G affinity chromatography

Uniprot ID

[Q92560](#)

Hazard Information

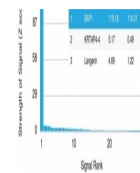
This BAP1 antibody is available for research use only.

Dilution Range

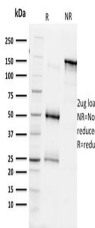
ELISA (order BSA/sodium azide-free format for coating)

Expiration Date

12 months from date of receipt.



Analysis of HuProt (TM) microarray conta...



SDS-PAGE analysis of purified, BSA-free ...