
Product Datasheet

**Calbindin 2 Antibody / CALB2 / Calretinin
(orb606857)**

Description

It recognizes a protein of about 29kDa, which is


Species/Host

Mouse

Reactivity

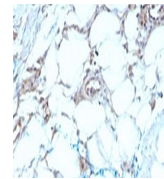
Human

Conjugation

Unconjugated

Tested Applications

IHC-P



IHC testing of
FFPE human
mesothelioma
W...

Immunogen

A portion of amino acids 23-242 from the human protein was used as the immunogen for the Calretinin antibody.

Preservatives

0.2 mg/ml in 1X PBS with 0.1 mg/ml rAlbumin (US sourced) and 0.05% sodium azide

Storage

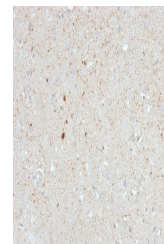
Store the Calretinin antibody at 2-8°C (with azide) or aliquot and store at -20°C or colder (without azide).

Note

For research use only

Application notes

Optimal dilution of the Calretinin antibody should be determined by the researcher.1. The prediluted format is supplied in a dropper bottle and is optimized for use in IHC. After epitope retrieval step (if required), drip mAb solution onto the tissue section and incubate at RT for 30 min.



IHC testing of
FFPE human
cerebellum
wit...

Formula

0.2 mg/ml in 1X PBS with 0.1 mg/ml BSA (US sourced) and 0.05% sodium azide

Isotype

Mouse IgG1, kappa

Clonality

Monoclonal

Purity

Protein G affinity

Uniprot ID

P22676

Hazard Information

This Calretinin antibody is available for research use only.

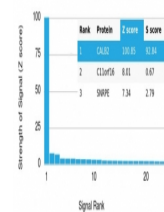
Dilution Range

Immunohistochemistry (FFPE): 1-2ug/ml for 30 min at RT

Expiration Date

12 months from date of receipt.

Human Protein Microarray Specificity Validation



Analysis of
HuProt (TM)
microarray
conta...