
Product Datasheet

14-3-3 epsilon Antibody / YWHAE (orb606854)

Description

Adapter protein implicated in the regulation of a large

Species/Host

Mouse

Reactivity

Human

Conjugation

Unconjugated

Tested Applications

IHC-P, WB

Immunogen

Full length recombinant human protein was used as the immunogen for the 14-3-3 epsilon antibody.

Preservatives

0.2 mg/ml in 1X PBS with 0.1 mg/ml rAlbumin (US sourced) and 0.05% sodium azide

Storage

Store the 14-3-3 epsilon antibody at 2-8°C (with azide) or aliquot and store at -20°C or colder (without azide).

Note

For research use only

Application notes

The stated application concentrations are suggested starting points. Titration of the 14-3-3 epsilon antibody may be required due to differences in protocols and secondary/substrate sensitivity.1. The prediluted format is supplied in a dropper bottle and is optimized for use in IHC. After epitope retrieval step (if required), drip mAb solution onto the tissue section and incubate at RT for 30 min.

Formula

0.2 mg/ml in 1X PBS with 0.1 mg/ml BSA (US sourced) and 0.05% sodium azide

Isotype

Mouse IgG2a, kappa

Clonality

Monoclonal

Purity

Protein G affinity chromatography

Uniprot ID

P62258

Hazard Information

This 14-3-3 epsilon antibody is available for research use only.

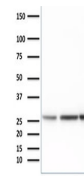
Dilution Range

Western blot: 1-2ug/ml, Immunohistochemistry (FFPE): 0.5-1ug/ml for 30 min at RT

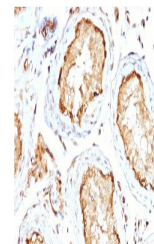
Expiration Date

12 months from date of receipt.

100
75
50
37
25
20
15
10

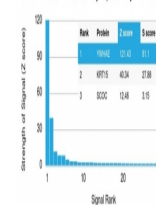


Western blot testing of human 1) HEK293,...



IHC staining of FFPE human testis with 1...

Human Protein Microarray Specificity Validation



Analysis of HuProt (TM) microarray conta...