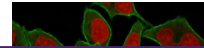

Product Datasheet

SPTBN2 Antibody / Spectrin beta III (orb606849)

Description

Spectrin is an actin binding protein that is a major



Species/Host Rabbit

Reactivity Human

Conjugation Unconjugated

Tested Applications FACS, IF, IHC-P, WB

Immunogen Human recombinant partial protein corresponding to amino acids 356-475 was used as the immunogen for this recombinant Spectrin beta III antibody.

Preservatives 0.2 mg/ml in 1X PBS with 0.1 mg/ml rAlbumin (US sourced) and 0.05% sodium azide

Storage Store the recombinant Spectrin beta III antibody at 2-8°C (with azide) or aliquot and store at -20°C or colder (without azide).

Note For research use only

Application notes The concentration stated for each application is a general starting point. Variations in protocols, secondaries and substrates may require the recombinant Spectrin beta III antibody to be titered up or down for optimal performance.

Formula 0.2 mg/ml in 1X PBS with 0.1 mg/ml BSA (US sourced) and 0.05% sodium azide

Isotype Rabbit IgG, kappa

Clonality Recombinant

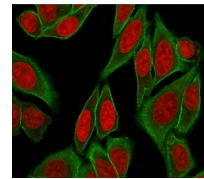
Purity Protein A affinity chromatography

Uniprot ID [O15020](#)

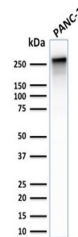
Hazard Information This recombinant Spectrin beta III antibody is available for research use only.

Dilution Range Flow cytometry: 1-2ug/million cells, Immunofluorescence: 1-2ug/ml, Western blot: 0.5-1ug/ml, Immunohistochemistry (FFPE): 0.5-1ug/ml for 30 min at RT

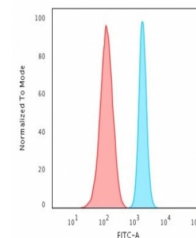
Expiration Date 12 months from date of receipt.



Immunofluorescent staining of fixed and ...



Western blot testing of human PANC-1 and...



FACS testing of fixed and permeabilized ...