
Product Datasheet

Estrogen Inducible Protein pS2 / TFF1 Antibody (orb606848)

Description

It recognizes a polypeptide of 6.5kDa, identified


Species/Host

Mouse

Reactivity

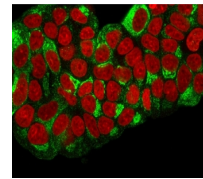
Human

Conjugation

Unconjugated

Tested Applications

FACS, IF, IHC-P



Immunofluorescent staining of PFA-fixed ...

Immunogen

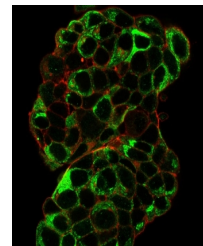
Recombinant human protein was used as the immunogen for this pS2 antibody.

Preservatives

0.2 mg/ml in 1X PBS with 0.1 mg/ml rAlbumin (US sourced) and 0.05% sodium azide

Storage

Store the pS2 antibody at 2-8°C (with azide) or aliquot and store at -20°C or colder (without azide).



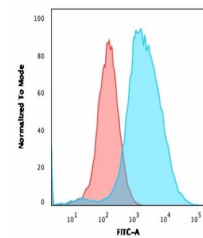
Immunofluorescent staining of PFA-fixed ...

Note

For research use only

Application notes

The optimal dilution of the pS2 antibody for each application should be determined by the researcher.1. The prediluted format is supplied in a dropper bottle and is optimized for use in IHC. After epitope retrieval step (if required), drip mAb solution onto the tissue section and incubate at RT for 30 min.



Flow cytometry staining of PFA-fixed hum...

Formula

0.2 mg/ml in 1X PBS with 0.1 mg/ml BSA (US sourced) and 0.05% sodium azide

Isotype

Mouse IgG2b, kappa

Clonality

Monoclonal

Purity

Protein G affinity chromatography

Uniprot ID

P04155

Hazard Information

This pS2 antibody is available for research use only.

Dilution Range

Flow cytometry: 1-2ug/million cells, Immunofluorescence: 1-2ug/ml, Immunohistochemistry (FFPE): 1-2ug/ml for 30 min at RT

Expiration Date

12 months from date of receipt.