

---

## Product Datasheet

### HNF1A Antibody (orb606847)

**Description**

HNF1A belongs to the homeobox protein family and is an


**Species/Host**

Mouse

**Reactivity**

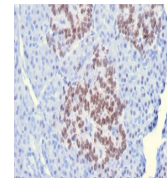
Human

**Conjugation**

Unconjugated

**Tested Applications**

ELISA, IHC-P



IHC staining of FFPE human pancreas with...

**Immunogen**

A portion of amino acids 214-339 from the human protein was used as the immunogen for the HNF1A antibody.

**Preservatives**

0.2 mg/ml in 1X PBS with 0.1 mg/ml rAlbumin (US sourced) and 0.05% sodium azide

**Storage**

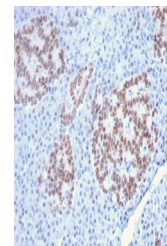
Store the HNF1A antibody at 2-8°C (with azide) or aliquot and store at -20°C or colder (without azide).

**Note**

For research use only

**Application notes**

Optimal dilution of the HNF1A antibody should be determined by the researcher.1. The prediluted format is supplied in a dropper bottle and is optimized for use in IHC. After epitope retrieval step (if required), drip mAb solution onto the tissue section and incubate at RT for 30 min.



IHC staining of FFPE human pancreas with...

**Formula**

0.2 mg/ml in 1X PBS with 0.1 mg/ml BSA (US sourced) and 0.05% sodium azide

**Isotype**

Mouse IgG1, kappa

**Clonality**

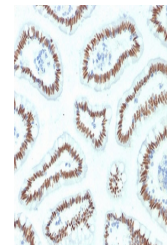
Monoclonal

**Purity**

Protein G affinity chromatography

**Uniprot ID**

**P20823**



IHC staining of FFPE human small intesti...

**Hazard Information**

This HNF1A antibody is available for research use only.

**Dilution Range**

ELISA: order BSA/sodium azide-free format for coating, Immunohistochemistry (FFPE): 1-2ug/ml for 30 min at RT

**Expiration Date**

12 months from date of receipt.