
Product Datasheet

SPTBN2 Antibody / Spectrin beta III (orb606846)

Description

Spectrin is an actin binding protein that is a major


Species/Host

Rabbit

Reactivity

Human

Conjugation

Unconjugated

Tested Applications

ELISA, FACS, IHC-P, WB

IHC testing of FFPE human pancreatic cancer...

Immunogen

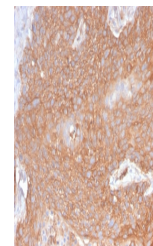
Human recombinant partial protein corresponding to amino acids 356-475 was used as the immunogen for this recombinant Spectrin beta III antibody.

Preservatives

0.2 mg/ml in 1X PBS with 0.1 mg/ml rAlbumin (US sourced) and 0.05% sodium azide

Storage

Store the recombinant Spectrin beta III antibody at 2-8°C (with azide) or aliquot and store at -20°C or colder (without azide).


Note

For research use only

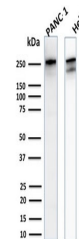
Application notes

The concentration stated for each application is a general starting point. Variations in protocols, secondaries and substrates may require the recombinant Spectrin beta III antibody to be titrated up or down for optimal performance.1. The prediluted format is supplied in a dropper bottle and is optimized for use in IHC. After epitope retrieval step (if required), drip mAb solution onto the tissue section and incubate at RT for 30 min.

IHC testing of FFPE human pancreatic cancer...

Formula

0.2 mg/ml in 1X PBS with 0.1 mg/ml BSA (US sourced) and 0.05% sodium azide


Isotype

Rabbit IgG, kappa

Western blot testing of human PANC-1 and...

Clonality

Recombinant

Purity

Protein A affinity chromatography

Uniprot ID

O15020

Hazard Information

This recombinant Spectrin beta III antibody is available for research use only.

Dilution Range

Flow cytometry: 1-2ug/million cells, ELISA: 2-4ug/ml (order BSA/azide-free format), Western blot: 1-2ug/ml, Immunohistochemistry (FFPE): 1-2ug/ml for 30 min at RT

Expiration Date

12 months from date of receipt.