
Product Datasheet

S100A4 Antibody / FSP1 (orb606845)

Description

S100A4 belongs to the S100 super-family of proteins

Species/Host

Mouse

Reactivity

Human

Conjugation

Unconjugated

Tested Applications

FACS, IF, WB

Immunogen

Recombinant human protein was used as the immunogen for this S100A4 antibody.

Preservatives

0.2 mg/ml in 1X PBS with 0.1 mg/ml rAlbumin (US sourced) and 0.05% sodium azide

Storage

Store the S100A4 antibody at 2-8°C (with azide) or aliquot and store at -20°C or colder (without azide).

Note

For research use only

Application notes

The optimal dilution of the S100A4 antibody for each application should be determined by the researcher. 1. The prediluted format is supplied in a dropper bottle and is optimized for use in IHC. After epitope retrieval step (if required), drip mAb solution onto the tissue section and incubate at RT for 30 min.

Formula

0.2 mg/ml in 1X PBS with 0.1 mg/ml BSA (US sourced) and 0.05% sodium azide

Isotype

Mouse IgG2c, kappa

Clonality

Monoclonal

Purity

Protein G affinity chromatography

Uniprot ID

[P26447](#)

Hazard Information

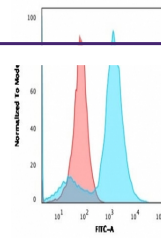
This S100A4 antibody is available for research use only.

Dilution Range

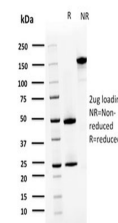
Flow cytometry: 1-2ug/million cells, Immunofluorescence: 1-2ug/ml, Western blot: 1-2ug/ml

Expiration Date

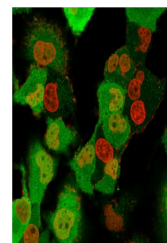
12 months from date of receipt.



Flow cytometry testing of human A549 cel...



SDS-PAGE analysis of purified, BSA-free ...



IF/ICC testing of fixed and permeabilize...