
Product Datasheet

S100A4 Antibody / FSP1 (orb606840)

Description

S100A4 belongs to the S100 super-family of proteins

Species/Host

Rabbit

Reactivity

Human, Mouse

Conjugation

Unconjugated

Tested Applications

FACS, IF, IHC-P, WB

Immunogen

A portion of amino acids 1-200 from the human protein was used as the immunogen for this recombinant S100A4 antibody.

Preservatives

0.2 mg/ml in 1X PBS with 0.1 mg/ml rAlbumin (US sourced) and 0.05% sodium azide

Storage

Store the recombinant S100A4 antibody at 2-8°C (with azide) or aliquot and store at -20°C or colder (without azide).

Note

For research use only

Application notes

The optimal dilution of the recombinant S100A4 antibody for each application should be determined by the researcher. 1. The prediluted format is supplied in a dropper bottle and is optimized for use in IHC. After epitope retrieval step (if required), drip mAb solution onto the tissue section and incubate at RT for 30 min.

Formula

0.2 mg/ml in 1X PBS with 0.1 mg/ml BSA (US sourced) and 0.05% sodium azide

Isotype

Rabbit IgG, kappa

Clonality

Recombinant

Purity

Protein A affinity chromatography

Uniprot ID

[P26447](#)

Hazard Information

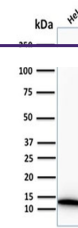
This recombinant S100A4 antibody is available for research use only.

Dilution Range

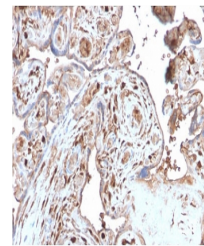
Western blot: 1-2ug/ml, Flow cytometry: 1-2ug/million cells, Immunofluorescence: 1-2ug/ml, Immunohistochemistry (FFPE): 1-2ug/ml for 30 min at RT

Expiration Date

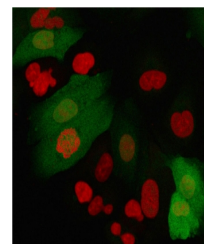
12 months from date of receipt.



Western blot testing of human HeLa cell ...



IHC testing of FFPE human placenta with ...



Immunofluorescent staining of permeabili...