

---

## Product Datasheet

### SPTA1 Antibody / Spectrin alpha 1 (orb606839)

**Description**

Spectrin is an actin crosslinking and molecular scaffold


**Species/Host**

Rabbit

**Reactivity**

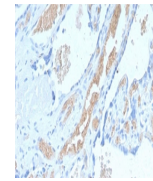
Human

**Conjugation**

Unconjugated

**Tested Applications**

ELISA, IHC-P, WB



IHC staining of FFPE human placenta with...

**Immunogen**

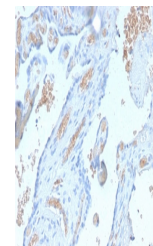
A portion of amino acids 356-475 from the human protein was used as the immunogen for the recombinant Spectrin alpha 1 antibody.

**Preservatives**

0.2 mg/ml in 1X PBS with 0.1 mg/ml rAlbumin (US sourced) and 0.05% sodium azide

**Storage**

Store the recombinant Spectrin alpha 1 antibody at 2-8°C (with azide) or aliquot and store at -20°C or colder (without azide).



IHC staining of FFPE human placenta with...

**Note**

For research use only

**Application notes**

Optimal dilution of the recombinant Spectrin alpha 1 antibody should be determined by the researcher.1. The prediluted format is supplied in a dropper bottle and is optimized for use in IHC. After epitope retrieval step (if required), drip mAb solution onto the tissue section and incubate at RT for 30 min.

**Formula**

0.2 mg/ml in 1X PBS with 0.1 mg/ml BSA (US sourced) and 0.05% sodium azide

**Isotype**

Rabbit IgG, kappa

**Clonality**

Recombinant

**Purity**

Protein A affinity chromatography

**Uniprot ID**

**P02549**

**Hazard Information**

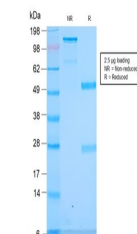
This recombinant Spectrin alpha 1 antibody is available for research use only.

**Dilution Range**

ELISA: 2-4ug/ml (order BSA/azide-free format),Western blot: 1-2ug/ml,Immunohistochemistry (FFPE): 1-2ug/ml for 30 min at RT

**Expiration Date**

12 months from date of receipt.



SDS-PAGE analysis of purified, BSA-free ...