
Product Datasheet

S100A2 Antibody (orb606838)

Description

S100A2 belongs to the S100 family of proteins containing

Species/Host

Mouse

Reactivity

Human

Conjugation

Unconjugated

Tested Applications

FACS, IF, IHC-P, WB

Immunogen

Recombinant human protein was used as the immunogen for the S100A2 antibody.

Preservatives

0.2 mg/ml in 1X PBS with 0.1 mg/ml rAlbumin (US sourced) and 0.05% sodium azide

Storage

Store the S100A2 antibody at 2-8°C (with azide) or aliquot and store at -20°C or colder (without azide).

Note

For research use only

Application notes

Optimal dilution of the recombinant S100A2 antibody should be determined by the researcher.1. The prediluted format is supplied in a dropper bottle and is optimized for use in IHC. After epitope retrieval step (if required), drip mAb solution onto the tissue section and incubate at RT for 30 min.

Formula

0.2 mg/ml in 1X PBS with 0.1 mg/ml BSA (US sourced) and 0.05% sodium azide

Isotype

Mouse IgG2b, kappa

Clonality

Monoclonal

Purity

Protein G affinity chromatography

Uniprot ID

P29034

Hazard Information

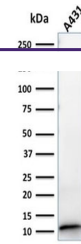
This S100A2 antibody is available for research use only.

Dilution Range

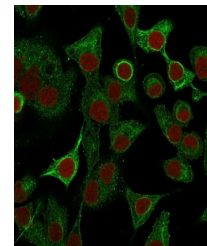
Western blot: 1-2ug/ml, Flow cytometry: 1-2ug/million cells, Immunofluorescence: 1-2ug/ml, Immunohistochemistry (FFPE): 0.5-1ug/ml for 30 min at RT

Expiration Date

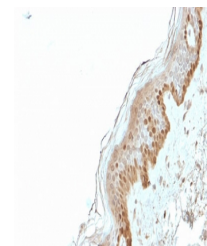
12 months from date of receipt.



Western blot testing of human A431 lysat...



Immunofluorescent staining of human A549...



IHC staining of FFPE human skin with S10...