

---

## Product Datasheet

### RPA32 Antibody / Replication Protein A2 (orb606837)

**Description**

Recognizes a protein of 34kDa, identified as a

as...

**Species/Host**

Mouse

**Reactivity**

Human

**Conjugation**

Unconjugated

**Tested Applications**

WB

**Immunogen**

Full length recombinant human protein was used as the immunogen for this RPA32 antibody.

**Preservatives**

0.2 mg/ml in 1X PBS with 0.1 mg/ml rAlbumin (US sourced) and 0.05% sodium azide

**Storage**

Store the RPA32 antibody at 2-8°C (with azide) or aliquot and store at -20°C or colder (without azide).

**Note**

For research use only

**Application notes**

Optimal dilution of the RPA32 antibody should be determined by the researcher.1. The prediluted format is supplied in a dropper bottle and is optimized for use in IHC. After epitope retrieval step (if required), drip mAb solution onto the tissue section and incubate at RT for 30 min.

**Formula**

0.2 mg/ml in 1X PBS with 0.1 mg/ml BSA (US sourced) and 0.05% sodium azide

**Isotype**

Mouse IgG2b, kappa

**Clonality**

Monoclonal

**Purity**

Protein G affinity chromatography

**Uniprot ID**

**P15927**

**Hazard Information**

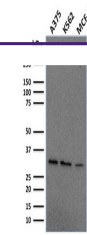
This RPA32 antibody is available for research use only.

**Dilution Range**

Western blot: 1-2ug/ml

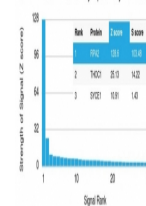
**Expiration Date**

12 months from date of receipt.



Western blot testing of human A375, K562...

Human Protein Microarray Specificity Validation



Analysis of HuProt (TM) microarray conta...