

Product Datasheet

Bcl6 Antibody (orb606836)

Description

Antibody to Bcl-6 is helpful in a number of diagnostic


Species/Host

Mouse

Reactivity

Human

Conjugation

Unconjugated

Tested Applications

IHC-P

Immunogen

Amino acids 256-389 were used as the immunogen for the recombinant Bcl6 antibody.

Preservatives

0.2 mg/ml in 1X PBS with 0.1 mg/ml rAlbumin (US sourced) and 0.05% sodium azide

Storage

Store the recombinant Bcl6 antibody at 2-8°C (with azide) or aliquot and store at -20°C or colder (without azide).

Note

For research use only

Application notes

Optimal dilution of the recombinant Bcl6 antibody should be determined by the researcher.1. The prediluted format is supplied in a dropper bottle and is optimized for use in IHC. After epitope retrieval step (if required), drip mAb solution onto the tissue section and incubate at RT for 30 min.

Formula

0.2 mg/ml in 1X PBS with 0.1 mg/ml BSA (US sourced) and 0.05% sodium azide

Isotype

Mouse IgG1, kappa

Clonality

Recombinant

Purity

Protein G affinity chromatography

Uniprot ID

[P41182](#)

Hazard Information

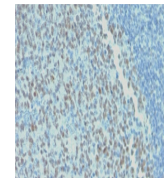
This recombinant Bcl6 antibody is available for research use only.

Dilution Range

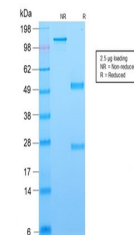
Immunohistochemistry (FFPE): 1-2ug/ml for 30 min at RT

Expiration Date

12 months from date of receipt.



IHC testing of FFPE human tonsil with re...



SDS-PAGE analysis of purified, BSA-free ...