

---

## Product Datasheet

### TMEPAI Antibody / PMEPA1 (orb606833)

**Description**

PMEPA1 (prostate transmembrane protein, androgen

andro...

**Species/Host**

Mouse

**Reactivity**

Human

**Conjugation**

Unconjugated

**Tested Applications**

IHC-P

**Immunogen**

Full-length recombinant human protein was used as the immunogen for the TMEPA1 antibody.

**Preservatives**

0.2 mg/ml in 1X PBS with 0.1 mg/ml rAlbumin (US sourced) and 0.05% sodium azide

**Storage**

Store the TMEPA1 antibody at 2-8°C (with azide) or aliquot and store at -20°C or colder (without azide).

**Note**

For research use only

**Application notes**

Optimal dilution of the TMEPA1 antibody should be determined by the researcher.1. The prediluted format is supplied in a dropper bottle and is optimized for use in IHC. After epitope retrieval step (if required), drip mAb solution onto the tissue section and incubate at RT for 30 min.

**Formula**

0.2 mg/ml in 1X PBS with 0.1 mg/ml BSA (US sourced) and 0.05% sodium azide

**Isotype**

Mouse IgG

**Clonality**

Monoclonal

**Purity**

Protein G affinity chromatography

**Uniprot ID**
[Q969W9](#)
**Hazard Information**

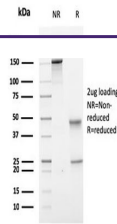
This TMEPA1 antibody is available for research use only.

**Dilution Range**

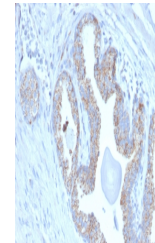
Immunohistochemistry (FFPE): 1-2ug/ml for 30 min at RT (1)

**Expiration Date**

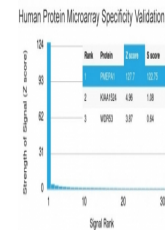
12 months from date of receipt.



SDS-PAGE analysis of purified, BSA-free ...



IHC staining of FFPE human prostate carc...



Analysis of HuProt (TM) microarray conta...