
Product Datasheet

POU2AF1 Antibody / BOB-1 (orb606824)

Description

BOB1, also called POU2AF1, expression in a variety of

Species/Host

Mouse

Reactivity

Human

Conjugation

Unconjugated

Tested Applications

FACS, IHC-P, WB

Immunogen

A portion of amino acids 148-255 from the human protein was used as the immunogen for the BOB1 antibody.

Preservatives

0.2 mg/ml in 1X PBS with 0.1 mg/ml rAlbumin (US sourced) and 0.05% sodium azide

Storage

Store the BOB1 antibody at 2-8°C (with azide) or aliquot and store at -20°C or colder (without azide).

Note

For research use only

Application notes

Optimal dilution of the BOB1 antibody should be determined by the researcher.1. The prediluted format is supplied in a dropper bottle and is optimized for use in IHC. After epitope retrieval step (if required), drip mAb solution onto the tissue section and incubate at RT for 30 min.

Formula

0.2 mg/ml in 1X PBS with 0.1 mg/ml BSA (US sourced) and 0.05% sodium azide

Isotype

Mouse IgG2b, kappa

Clonality

Monoclonal

Purity

Protein G affinity

Uniprot ID
[Q16633](#)
Hazard Information

This BOB1 antibody is available for research use only.

Dilution Range

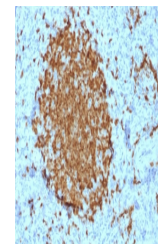
Flow cytometry: 1-2ug/ml, Western blot: 1-2ug/ml, Immunohistochemistry (FFPE): 1-2ug/ml for 30 min at RT

Expiration Date

12 months from date of receipt.

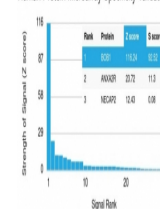


Western blot testing of human Raji cell ...



IHC testing of FFPE human spleen with BO...

Human Protein Microarray Specificity Validation



Analysis of HuProt (TM) microarray conta...