
Product Datasheet

Neurofilament Antibody (-Heavy) / NF-H / NEFH (orb606815)

Description

This MAb reacts with a 200kDa protein, identified as


Species/Host

Rabbit

Reactivity

Human

Conjugation

Unconjugated

Tested Applications

FACS, IHC-P, WB

Immunogen

Recombinant human protein (heavy subunit) was used as the immunogen for the recombinant Neurofilament antibody.

Preservatives

0.2 mg/ml in 1X PBS with 0.1 mg/ml rAlbumin (US sourced) and 0.05% sodium azide

Storage

Store the recombinant Neurofilament antibody at 2-8°C (with azide) or aliquot and store at -20°C or colder (without azide).

Note

For research use only

Application notes

The usable concentrations in the Applications Details are suggestions only. The use of different protocols/secondaries/substrates may require the recombinant Neurofilament antibody to be titrated for optimal performance.1. The prediluted format is supplied in a dropper bottle and is optimized for use in IHC. After epitope retrieval step (if required), drip mAb solution onto the tissue section and incubate at RT for 30 min.

Formula

0.2 mg/ml in 1X PBS with 0.1 mg/ml BSA (US sourced) and 0.05% sodium azide

Isotype

Rabbit IgG, kappa

Clonality

Recombinant

Purity

Protein A affinity

Uniprot ID

P12036

Hazard Information

This recombinant Neurofilament antibody is available for research use only.

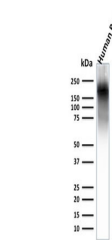
Dilution Range

Western blot: 1-2ug/ml, Flow cytometry: 1-2ug/million cells, Immunohistochemistry (FFPE): 1-2ug/ml for 30 min at RT

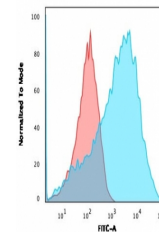
Expiration Date

12 months from date of receipt.

IHC staining of FFPE human cerebellum
Wi...



Western blot testing of human brain lysa...



Flow cytometry testing of permeabilized
...