
Product Datasheet

MUC1 Antibody / Mucin-1 (orb606814)

Description

MUC1 is a large cell surface mucin glycoprotein expressed


Species/Host

Rabbit

Reactivity

Human

Conjugation

Unconjugated

Tested Applications

ELISA, IHC-P, WB

Immunogen

Human milk fat globule membranes were used as the immunogen for this recombinant Mucin-1 antibody.

Preservatives

0.2 mg/ml in 1X PBS with 0.1 mg/ml rAlbumin (US sourced) and 0.05% sodium azide

Storage

Store the recombinant Mucin-1 antibody at 2-8°C (with azide) or aliquot and store at -20°C or colder (without azide).

Note

For research use only

Application notes

Titration of the recombinant Mucin-1 may be required due to differences in protocols and secondary/substrate sensitivity.1. The prediluted format is supplied in a dropper bottle and is optimized for use in IHC. After epitope retrieval step (if required), drip mAb solution onto the tissue section and incubate at RT for 30 min.

Formula

0.2 mg/ml in 1X PBS with 0.1 mg/ml BSA (US sourced) and 0.05% sodium azide

Isotype

Rabbit IgG, kappa

Clonality

Recombinant

Purity

Protein A affinity chromatography

Uniprot ID

[P15941](#)

Hazard Information

This recombinant Mucin-1 antibody is available for research use only.

Entrez

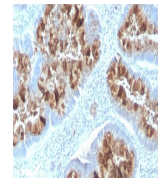
[4582](#)

Dilution Range

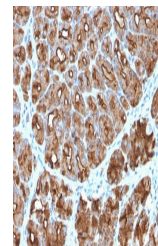
ELISA: 2-5ug/ml (order BSA/sodium azide-free format), Immunohistochemistry (FFPE): 0.25-0.5ug/ml for 30 min at RT, Western blot: 1-2ug/ml

Expiration Date

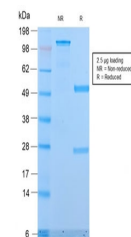
12 months from date of receipt.



IHC testing of FFPE human colon with rec...



IHC testing of FFPE human stomach carcin...



SDS-PAGE analysis of purified, BSA-free ...