

---

## Product Datasheet

### MUC2 Antibody / Mucin 2 (orb606813)

**Description**

Recognizes a single glycoprotein of 520kDa, identified


**Species/Host**

Rabbit

**Reactivity**

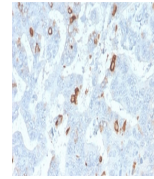
Human

**Conjugation**

Unconjugated

**Tested Applications**

IHC-P



IHC staining of FFPE human colon tissue ...

**Immunogen**

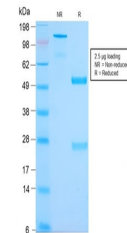
Recombinant human protein was used as the immunogen for the recombinant MUC2 antibody. Its epitope has been defined as GTQTP.

**Preservatives**

0.2 mg/ml in 1X PBS with 0.1 mg/ml rAlbumin (US sourced) and 0.05% sodium azide

**Storage**

Store the recombinant MUC2 antibody at 2-8°C (with azide) or aliquot and store at -20°C or colder (without azide).


**Note**

For research use only

**Application notes**

Titering of the recombinant MUC2 antibody may be required for optimal performance.1. The prediluted format is supplied in a dropper bottle and is optimized for use in IHC. After epitope retrieval step (if required), drip mAb solution onto the tissue section and incubate at RT for 30 min.

SDS-PAGE analysis of purified, BSA-free ...

**Formula**

0.2 mg/ml in 1X PBS with 0.1 mg/ml BSA (US sourced) and 0.05% sodium azide

**Isotype**

Rabbit IgG, kappa

**Clonality**

Recombinant

**Purity**

Protein A affinity chromatography

**Uniprot ID**

[Q02817](#)

**Hazard Information**

This recombinant MUC2 antibody is available for research use only.

**Dilution Range**

Immunohistochemistry (FFPE): 1-2ug/ml for 30 min at RT (1)

**Expiration Date**

12 months from date of receipt.