
Product Datasheet

Galectin 1 Antibody / LGALS1 (orb606808)

Description

Galectin 1 is a member of the beta-galactoside-binding

Species/Host

Rabbit

Reactivity

Human

Conjugation

Unconjugated

Tested Applications

ELISA, IHC-P, WB

Immunogen

A human recombinant partial protein corresponding to amino acids 12-108 was used as the immunogen for the recombinant Galectin 1 antibody.

Preservatives

0.2 mg/ml in 1X PBS with 0.1 mg/ml rAlbumin (US sourced) and 0.05% sodium azide

Storage

Store the recombinant Galectin 1 antibody at 2-8°C (with azide) or aliquot and store at -20°C or colder (without azide).

Note

For research use only

Application notes

Titering of the recombinant Galectin 1 antibody may be required for optimal performance.1. The prediluted format is supplied in a dropper bottle and is optimized for use in IHC. After epitope retrieval step (if required), drip mAb solution onto the tissue section and incubate at RT for 30 min.

Formula

0.2 mg/ml in 1X PBS with 0.1 mg/ml BSA (US sourced) and 0.05% sodium azide

Isotype

Rabbit IgG, kappa

Clonality

Recombinant

Purity

Protein G affinity chromatography

Uniprot ID

[P09382](#)

Hazard Information

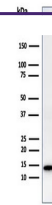
This recombinant Galectin 1 antibody is available for research use only.

Dilution Range

ELISA: 2-4ug/ml (order BSA/azide-free format),Immunohistochemistry (FFPE): 0.5-1ug/ml for 30 min at RT,Western blot: 1-2ug/ml

Expiration Date

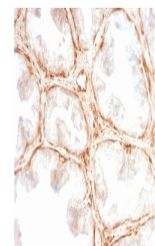
12 months from date of receipt.



Western blot testing of human HeLa cell ...



Western blot testing of human JEG-3 a...



IHC testing of FFPE human prostate carci...