
Product Datasheet

KRT16 Antibody / Cytokeratin 16 (orb606804)

Description

Cytokeratins are a family of intermediate filament


Species/Host

Mouse

Reactivity

Human

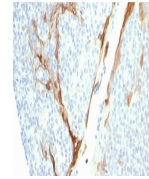
Conjugation

Unconjugated

Tested Applications

IHC-P

IHC testing of FFPE human tonsil with re...


Immunogen

A C-terminal region peptide was used as the immunogen for the recombinant Cytokeratin 16 antibody.

Preservatives

0.2 mg/ml in 1X PBS with 0.1 mg/ml rAlbumin (US sourced) and 0.05% sodium azide

Storage

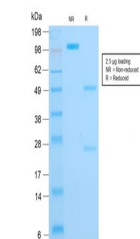
Store the recombinant Cytokeratin 16 antibody at 2-8°C (with azide) or aliquot and store at -20°C or colder (without azide).

Note

For research use only

Application notes

Optimal dilution of the recombinant Cytokeratin 16 antibody should be determined by the researcher.1. The prediluted format is supplied in a dropper bottle and is optimized for use in IHC. After epitope retrieval step (if required), drip mAb solution onto the tissue section and incubate at RT for 30 min.



SDS-PAGE analysis of purified, BSA-free ...

Formula

0.2 mg/ml in 1X PBS with 0.1 mg/ml BSA (US sourced) and 0.05% sodium azide

Isotype

Mouse IgG1, kappa

Clonality

Recombinant

Purity

Protein G affinity chromatography

Uniprot ID

P08779

Hazard Information

This recombinant Cytokeratin 16 antibody is available for research use only.

Dilution Range

Immunohistochemistry (FFPE): 0.5-1ug/ml for 30 min at RT

Expiration Date

12 months from date of receipt.