

---

## Product Datasheet

### Neuregulin-1 Antibody / NRG1 (orb606795)

**Description**

Heregulin-1 / Neuregulin-1 is a membrane

plays a ...

**Species/Host**

Mouse

**Reactivity**

Human

**Conjugation**

Unconjugated

**Tested Applications**

ELISA, IF

**Immunogen**

A portion of amino acids 21-242 from the human protein was used as the immunogen for this Neuregulin-1 antibody.

**Preservatives**

0.2 mg/ml in 1X PBS with 0.1 mg/ml rAlbumin (US sourced) and 0.05% sodium azide

**Storage**

Store the Neuregulin-1 antibody at 2-8°C (with azide) or aliquot and store at -20°C or colder (without azide).

**Note**

For research use only

**Application notes**

The concentration stated for each application is a general starting point. Variations in protocols, secondaries and substrates may require the Neuregulin-1 antibody to be titrated up or down for optimal performance.1. The prediluted format is supplied in a dropper bottle and is optimized for use in IHC. After epitope retrieval step (if required), drip mAb solution onto the tissue section and incubate at RT for 30 min.

**Formula**

0.2 mg/ml in 1X PBS with 0.1 mg/ml BSA (US sourced) and 0.05% sodium azide

**Isotype**

Mouse IgG

**Clonality**

Monoclonal

**Purity**

Protein G affinity chromatography

**Uniprot ID**
[Q02297](#)
**Hazard Information**

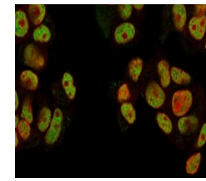
This Neuregulin-1 antibody is available for research use only.

**Dilution Range**

ELISA (order BSA/sodium azide-free format for coating), Immunofluorescence: 1-2ug/ml

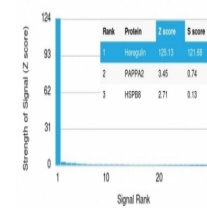
**Expiration Date**

12 months from date of receipt.

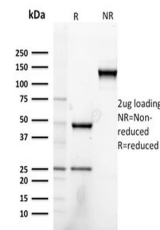


Immunofluorescent staining of human MCF7...

Human Protein Microarray Specificity Validation



Analysis of HuProt (TM) microarray conta...



SDS-PAGE analysis of purified, BSA-free ...