

Product Datasheet

**Glycoprotein 2 Antibody / GP2 / ZAP75
(orb606790)**

Description

GP2 (Glycoprotein 2), also known as ZAP75, is a 537


Species/Host

Rabbit

Reactivity

Human

Conjugation

Unconjugated

Tested Applications

ELISA, IHC-P, WB

Immunogen

A partial human recombinant protein corresponding to amino acids 35-179 was used as the immunogen for the recombinant Glycoprotein 2 antibody.

Preservatives

0.2 mg/ml in 1X PBS with 0.1 mg/ml rAlbumin (US sourced) and 0.05% sodium azide

Storage

Store the recombinant Glycoprotein 2 antibody at 2-8°C (with azide) or aliquot and store at -20°C or colder (without azide).

Note

For research use only

Application notes

Optimal dilution of the recombinant Glycoprotein 2 antibody should be determined by the researcher.1. The prediluted format is supplied in a dropper bottle and is optimized for use in IHC. After epitope retrieval step (if required), drip mAb solution onto the tissue section and incubate at RT for 30 min.

Formula

0.2 mg/ml in 1X PBS with 0.1 mg/ml BSA (US sourced) and 0.05% sodium azide

Isotype

Rabbit IgG, kappa

Clonality

Recombinant

Purity

Protein A affinity chromatography

Uniprot ID

P55259

Hazard Information

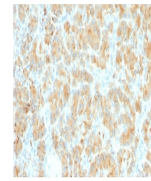
This recombinant Glycoprotein 2 antibody is available for research use only.

Dilution Range

ELISA: 2-4ug/ml (order BSA/azide-free format),Western blot: 1-2ug/ml,Immunohistochemistry (FFPE): 1-2ug/ml for 30 min at RT (1)

Expiration Date

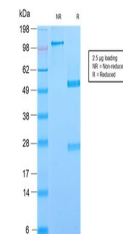
12 months from date of receipt.



IHC testing of FFPE human pancreas with ...



Western blot testing of human pancreas I...



SDS-PAGE analysis of purified, BSA-free ...