
Product Datasheet

Placental Alkaline Phosphatase Antibody / ALPP (orb606705)

Description

PLAP is a tissue specific, trophoblast-derived, 70kDa,


Species/Host

Rabbit

Reactivity

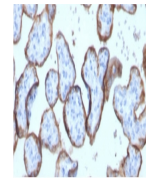
Human

Conjugation

Unconjugated

Tested Applications

IHC-P, WB



IHC testing of FFPE human placenta with ...

Immunogen

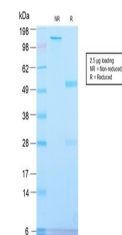
Recombinant full-length human protein was used as the immunogen for the recombinant Placental Alkaline Phosphatase antibody.

Preservatives

0.2 mg/ml in 1X PBS with 0.1 mg/ml rAlbumin (US sourced) and 0.05% sodium azide

Storage

Store the recombinant Placental Alkaline Phosphatase antibody at 2-8°C (with azide) or aliquot and store at -20°C or colder (without azide).



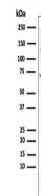
SDS-PAGE analysis of purified, BSA-free ...

Note

For research use only

Application notes

Optimal dilution of the recombinant Placental Alkaline Phosphatase antibody should be determined by the researcher.1. The prediluted format is supplied in a dropper bottle and is optimized for use in IHC. After epitope retrieval step (if required), drip mAb solution onto the tissue section and incubate at RT for 30 min.



Western blot testing of human JEG-3 cell...

Formula

0.2 mg/ml in 1X PBS with 0.1 mg/ml BSA (US sourced) and 0.05% sodium azide

Isotype

Rabbit IgG, kappa

Clonality

Recombinant

Purity

Protein A affinity chromatography

Uniprot ID

P05187

Hazard Information

This recombinant Placental Alkaline Phosphatase antibody is available for research use only.

Dilution Range

Western blot: 1-2ug/ml, Immunohistochemistry (FFPE): 1-2ug/ml for 30 min at RT

Expiration Date

12 months from date of receipt.