

---

## Product Datasheet

### AKR1B1 Antibody / Aldose reductase (orb606701)

**Description**

AKR1B1, also designated as aldose reductase, is a


**Species/Host**

Mouse

**Reactivity**

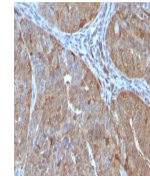
Human

**Conjugation**

Unconjugated

**Tested Applications**

IF, IHC-P, WB



IHC testing of FFPE human prostate with ...

**Immunogen**

Recombinant protein was used as the immunogen for this AKR1B1 antibody.

**Preservatives**

0.2 mg/ml in 1X PBS with 0.1 mg/ml rAlbumin (US sourced) and 0.05% sodium azide

**Storage**

Store the AKR1B1 antibody at 2-8°C (with azide) or aliquot and store at -20°C or colder (without azide).

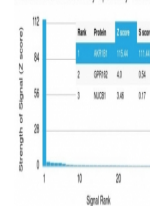
**Note**

For research use only

**Application notes**

The optimal dilution of the AKR1B1 antibody for each application should be determined by the researcher. 1. The prediluted format is supplied in a dropper bottle and is optimized for use in IHC. After epitope retrieval step (if required), drip mAb solution onto the tissue section and incubate at RT for 30 min.

Human Protein Microarray Specificity Validation



Analysis of HuProt (TM) microarray conta...

**Formula**

0.2 mg/ml in 1X PBS with 0.1 mg/ml BSA (US sourced) and 0.05% sodium azide

**Isotype**

Mouse IgG1

**Clonality**

Monoclonal

**Purity**

Protein G affinity chromatography

**Uniprot ID**

**P15121**

**Hazard Information**

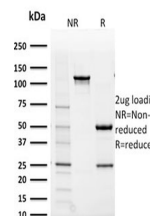
This AKR1B1 antibody is available for research use only.

**Dilution Range**

Western blot: 0.5-1ug/ml, Immunofluorescence: 1-2ug/ml, Immunohistochemistry (FFPE): 0.5-1ug/ml for 30 min at RT

**Expiration Date**

12 months from date of receipt.



SDS-PAGE analysis of purified, BSA-free ...