
Product Datasheet

Carboxypeptidase A1 Antibody / CPA1 (orb606700)

Description

Human pancreatic procarboxypeptidase A exists as


Species/Host

Mouse

Reactivity

Human

Conjugation

Unconjugated

Tested Applications

IHC-P, WB

IHC testing of FFPE human pancreas with ...

Immunogen

Full length recombinant human protein was used as the immunogen for the Carboxypeptidase A1 antibody.

Preservatives

0.2 mg/ml in 1X PBS with 0.1 mg/ml rAlbumin (US sourced) and 0.05% sodium azide

Storage

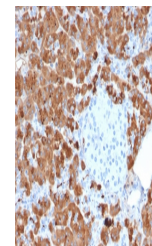
Store the Carboxypeptidase A1 antibody at 2-8°C (with azide) or aliquot and store at -20°C or colder (without azide).

Note

For research use only

Application notes

Optimal dilution of the Carboxypeptidase A1 antibody should be determined by the researcher.1. The prediluted format is supplied in a dropper bottle and is optimized for use in IHC. After epitope retrieval step (if required), drip mAb solution onto the tissue section and incubate at RT for 30 min.



IHC testing of FFPE human pancreas with ...

Formula

0.2 mg/ml in 1X PBS with 0.1 mg/ml BSA (US sourced) and 0.05% sodium azide

Isotype

Mouse IgG2c, kappa

Clonality

Monoclonal

Purity

Protein G affinity

Uniprot ID

P15085

Hazard Information

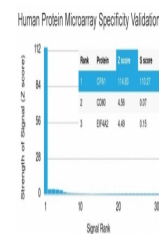
This Carboxypeptidase A1 antibody is available for research use only.

Dilution Range

Western blot: 1-2ug/ml, Immunohistochemistry (FFPE): 1-2ug/ml for 30 min at RT

Expiration Date

12 months from date of receipt.



Analysis of HuProt (TM) microarray conta...