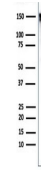

Product Datasheet

EGF Receptor / EGFR Antibody (orb606695)

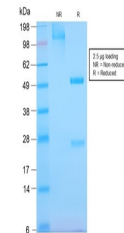
Description

Receptor tyrosine kinase binding ligands of the EGF

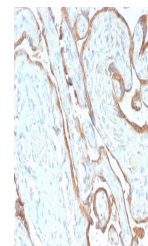
Species/Host	Rabbit
Reactivity	Human
Conjugation	Unconjugated
Tested Applications	IHC-P, WB
Immunogen	Recombinant human protein was used as the immunogen for the recombinant EGF Receptor antibody.
Preservatives	0.2 mg/ml in 1X PBS with 0.1 mg/ml rAlbumin (US sourced) and 0.05% sodium azide
Storage	Store the recombinant EGF Receptor antibody at 2-8°C (with azide) or aliquot and store at -20°C or colder (without azide).
Note	For research use only
Application notes	Titering of the recombinant EGF Receptor antibody may be required for optimal performance.1. The prediluted format is supplied in a dropper bottle and is optimized for use in IHC. After epitope retrieval step (if required), drip mAb solution onto the tissue section and incubate at RT for 30 min.
Formula	0.2 mg/ml in 1X PBS with 0.1 mg/ml BSA (US sourced) and 0.05% sodium azide
Isotype	Rabbit IgG, kappa
Clonality	Recombinant
Purity	Protein A affinity chromatography
Uniprot ID	P00533
Hazard Information	This recombinant EGF Receptor antibody is available for research use only.
Dilution Range	Immunohistochemistry (FFPE): 1-2ug/ml for 30 min at RT,Western blot: 1-2ug/ml
Expiration Date	12 months from date of receipt.



Western blot testing of human A431 cell ...



SDS-PAGE analysis of purified, BSA-free ...



IHC testing of FFPE human placenta with ...