
Product Datasheet

CD21 Antibody (orb606689)

Description

Recognizes a protein of 140kDa, which is identified as the

Species/Host

Mouse

Reactivity

Human

Conjugation

Unconjugated

Tested Applications

ELISA, FACS, IF, IHC-P, WB

Immunogen

A portion of amino acids 142-240 from the human protein was used as the immunogen for the CD21 antibody.

Preservatives

0.2 mg/ml in 1X PBS with 0.1 mg/ml rAlbumin (US sourced) and 0.05% sodium azide

Storage

Store the CD21 antibody at 2-8°C (with azide) or aliquot and store at -20°C or colder (without azide).

Note

For research use only

Application notes

Optimal dilution of the CD21 antibody should be determined by the researcher.1. The prediluted format is supplied in a dropper bottle and is optimized for use in IHC. After epitope retrieval step (if required), drip mAb solution onto the tissue section and incubate at RT for 30 min.

Formula

0.2 mg/ml in 1X PBS with 0.1 mg/ml BSA (US sourced) and 0.05% sodium azide

Isotype

Mouse IgG1, kappa

Clonality

Monoclonal

Purity

Protein G affinity chromatography

Uniprot ID

P20023

Hazard Information

This CD21 antibody is available for research use only.

Dilution Range

ELISA (order BSA/sodium azide-free format for coating),Flow cytometry: 1-2ug/million cells,Western blot: 1-2ug/ml,Immunofluorescence: 1-2ug/ml,Immunohistochemistry (FFPE): 1-2ug/ml for 30 min at RT

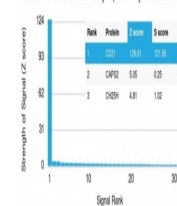
Expiration Date

12 months from date of receipt.

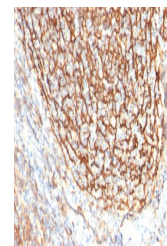


Western blot testing of human Raji cell ...

Human Protein Microarray Specificity Validation



Analysis of HuProt (TM) microarray conta...



IHC testing of FFPE human tonsil tissue ...