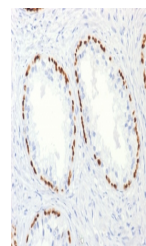


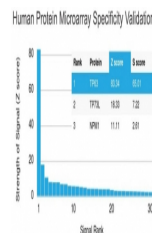
## Product Datasheet

### p63 Antibody / Tumor protein 63 (orb606668)

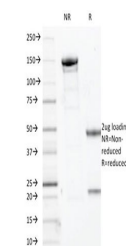
|                            |   |
|----------------------------|---|
| <b>Description</b>         | p63 is a homolog of the tumor suppressor p53. It is identified in basal cells in the epithelial laye... |
| <b>Species/Host</b>        | Mouse   |
| <b>Reactivity</b>          | Human   |
| <b>Conjugation</b>         | Unconjugated  |
| <b>Tested Applications</b> | IHC-P   |
| <b>Immunogen</b>           | Full length human recombinant protein was used as the immunogen for the p63 antibody.                   |
| <b>Preservatives</b>       | 0.2 mg/ml in 1X PBS with 0.1 mg/ml rAlbumin (US sourced) and 0.05% sodium azide                         |
| <b>Storage</b>             | Store the p63 antibody at 2-8°C (with azide) or aliquot and store at -20°C or colder (without azide).   |
| <b>Note</b>                | For research use only   |
| <b>Application notes</b>   | Optimal dilution of the p63 antibody should be determined by the researcher.                            |
| <b>Formula</b>             | 0.2 mg/ml in 1X PBS with 0.1 mg/ml BSA (US sourced) and 0.05% sodium azide                              |
| <b>Isotype</b>             | Mouse IgG2b, kappa  |
| <b>Clonality</b>           | Monoclonal  |
| <b>Purity</b>              | Protein G affinity chromatography   |
| <b>Uniprot ID</b>          | <b>Q9H3D4</b>   |
| <b>Hazard Information</b>  | This p63 antibody is available for research use only.   |
| <b>Dilution Range</b>      | Immunohistochemistry (FFPE): 1-2ug/ml for 30 min at RT  |
| <b>Expiration Date</b>     | 12 months from date of receipt.   |



IHC testing of FFPE human prostate carcinoma...



Analysis of HuProt (TM) microarray conta...



SDS-PAGE analysis of purified, BSA-free ...