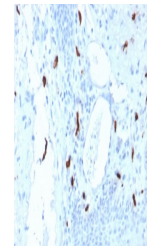


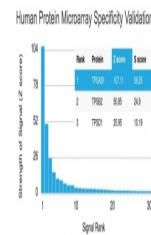
Product Datasheet

TPSAB1 Antibody / Mast Cell Tryptase (orb606665)

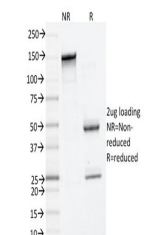
Description	Tryptases comprise a family of trypsin-like serine proteases (peptidase family S1). Tryptases are st...
Species/Host	Mouse
Reactivity	Human
Conjugation	Unconjugated
Tested Applications	IHC-P
Immunogen	A portion of amino acids 115-233 from the human protein was used as the immunogen for this TPSAB1 antibody.
Preservatives	0.2 mg/ml in 1X PBS with 0.1 mg/ml rAlbumin (US sourced) and 0.05% sodium azide
Storage	Store the TPSAB1 antibody at 2-8°C (with azide) or aliquot and store at -20°C or colder (without azide).
Note	For research use only
Application notes	Optimal dilution of the TPSAB1 antibody should be determined by the researcher.
Formula	0.2 mg/ml in 1X PBS with 0.1 mg/ml BSA (US sourced) and 0.05% sodium azide
Isotype	Mouse IgG1, kappa
Clonality	Monoclonal
Purity	Protein G affinity chromatography
Uniprot ID	Q15661
Hazard Information	This TPSAB1 antibody is available for research use only.
Dilution Range	Immunohistochemistry (FFPE): 1-2ug/ml for 30 min at RT
Expiration Date	12 months from date of receipt.



IHC testing of FFPE human tonsil tissue ...



Analysis of HuProt (TM) microarray conta...



SDS-PAGE analysis of purified, BSA-free ...