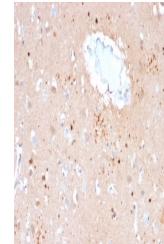


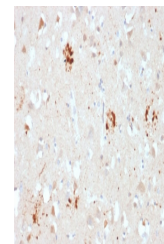
Product Datasheet

Ubiquitin Antibody (orb606657)

Description	Ubiquitin is a highly conserved and plays an essential role in the ubiquitin-proteasome pathway. In ...
Species/Host	Mouse
Reactivity	Human
Conjugation	Unconjugated
Tested Applications	ELISA, IHC-P, WB
Immunogen	A portion of amino acids 1-119 from the human protein was used as the immunogen for the Ubiquitin antibody.
Preservatives	0.2 mg/ml in 1X PBS with 0.1 mg/ml rAlbumin (US sourced) and 0.05% sodium azide
Storage	Store the Ubiquitin antibody at 2-8°C (with azide) or aliquot and store at -20°C or colder (without azide).
Note	For research use only
Application notes	Optimal dilution of the Ubiquitin antibody should be determined by the researcher.
Formula	0.2 mg/ml in 1X PBS with 0.1 mg/ml BSA (US sourced) and 0.05% sodium azide
Isotype	Mouse IgG1, kappa
Clonality	Monoclonal
Purity	Protein G affinity chromatography
Uniprot ID	P62988, P62987, P0CG48, P0CG47, P62979
Hazard Information	This Ubiquitin antibody is available for research use only.
Dilution Range	ELISA (order BSA/sodium azide-free format for coating), Western blot: 1-2ug/ml, Immunohistochemistry (FFPE): 1-2ug/ml for 30 min at RT
Expiration Date	12 months from date of receipt.



IHC staining of FFPE human brain with Ub...



IHC staining of FFPE human brain with Ub...



Western blot testing of human Raji cell ...