
Product Datasheet

Ubiquitin Antibody (orb606656)

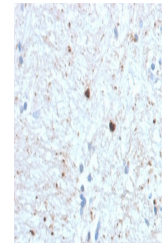
Description

Ubiquitin is a highly conserved and plays an essential role

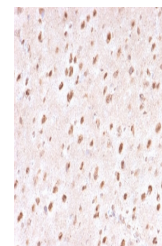
Species/Host	Mouse
Reactivity	Human
Conjugation	Unconjugated
Tested Applications	FACS, IF, IHC-P, WB
Immunogen	A portion of amino acids 1-119 from the human protein was used as the immunogen for the Ubiquitin antibody.
Preservatives	0.2 mg/ml in 1X PBS with 0.1 mg/ml rAlbumin (US sourced) and 0.05% sodium azide
Storage	Store the Ubiquitin antibody at 2-8°C (with azide) or aliquot and store at -20°C or colder (without azide).
Note	For research use only
Application notes	Optimal dilution of the Ubiquitin antibody should be determined by the researcher.
Formula	0.2 mg/ml in 1X PBS with 0.1 mg/ml BSA (US sourced) and 0.05% sodium azide
Isotype	Mouse IgG2c, kappa
Clonality	Monoclonal
Purity	Protein G affinity chromatography
Uniprot ID	P62988, P62987, P0CG48, P0CG47, P62979
Hazard Information	This Ubiquitin antibody is available for research use only.
Dilution Range	Flow cytometry: 1-2ug/million cells,Western blot: 1-2ug/ml,Immunofluorescence: 1-2ug/ml,Immunohistochemistry (FFPE): 1-2ug/ml for 30 min at RT
Expiration Date	12 months from date of receipt.



Western blot testing of human Raji cell ...



IHC staining of FFPE human brain with Ub...



IHC staining of FFPE human brain with Ub...