

---

## Product Datasheet

### PMEL17 / Melanoma gp100 Antibody (orb606654)

**Description**

Cytotoxic T lymphocytes (CTL's) recognize melanoma-

**Species/Host**

Mouse

**Reactivity**

Human

**Conjugation**

Unconjugated

**Tested Applications**

ELISA, IHC-P, WB

**Immunogen**

A portion of amino acids 376-502 from the human protein was used as the immunogen for the Melanoma gp100 antibody.

**Preservatives**

0.2 mg/ml in 1X PBS with 0.1 mg/ml rAlbumin (US sourced) and 0.05% sodium azide

**Storage**

Store the Melanoma gp100 antibody at 2-8°C (with azide) or aliquot and store at -20°C or colder (without azide).

**Note**

For research use only

**Application notes**

Optimal dilution of the Melanoma gp100 antibody should be determined by the researcher.

**Formula**

0.2 mg/ml in 1X PBS with 0.1 mg/ml BSA (US sourced) and 0.05% sodium azide

**Isotype**

Mouse IgG1, kappa

**Clonality**

Monoclonal

**Purity**

Protein G affinity chromatography

**Uniprot ID**
**P40967**
**Hazard Information**

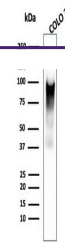
This Melanoma gp100 antibody is available for research use only.

**Dilution Range**

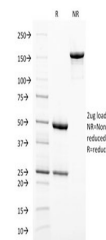
ELISA: 2-4ug/ml (order BSA/azide-free format), Immunohistochemistry (FFPE): 1-2ug/ml for 30 min at RT, Western blot: 1-2ug/ml

**Expiration Date**

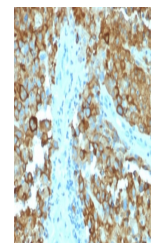
12 months from date of receipt.



Western blot testing of human COLO-38 ce...



SDS-PAGE analysis of purified, BSA-free ...



IHC testing of human melanoma with Melan...