
Product Datasheet

PMEL17 / Melanoma gp100 Antibody (orb606653)

Description

Cytotoxic T lymphocytes (CTL's) recognize melanoma-


Species/Host

Mouse

Reactivity

Human

Conjugation

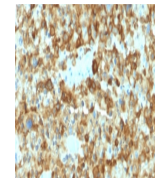
Unconjugated

Tested Applications

ELISA, IHC-P, WB

Immunogen

A portion of amino acids 376-502 from the human protein was used as the immunogen for the PMEL17 antibody.



IHC testing of human melanoma with PMEL17...

Preservatives

0.2 mg/ml in 1X PBS with 0.1 mg/ml rAlbumin (US sourced) and 0.05% sodium azide

Storage

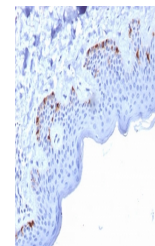
Store the PMEL17 antibody at 2-8°C (with azide) or aliquot and store at -20°C or colder (without azide).

Note

For research use only

Application notes

Optimal dilution of the PMEL17 antibody should be determined by the researcher.



IHC testing of human skin with PMEL17 an...

Formula

0.2 mg/ml in 1X PBS with 0.1 mg/ml BSA (US sourced) and 0.05% sodium azide

Isotype

Mouse IgG1, kappa

Clonality

Monoclonal

Purity

Protein G affinity chromatography

Uniprot ID

P40967

Hazard Information

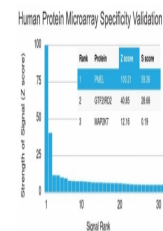
This PMEL17 antibody is available for research use only.

Dilution Range

ELISA: 2-4ug/ml (order BSA/azide-free format), Immunohistochemistry (FFPE): 1-2ug/ml for 30 min at RT, Western blot: 1-2ug/ml

Expiration Date

12 months from date of receipt.



Analysis of HuProt (TM) microarray conta...