
Product Datasheet

PMEL17 / Melanoma gp100 Antibody (orb606652)

Description

Cytotoxic T lymphocytes (CTL's) recognize melanoma-


Species/Host

Mouse

Reactivity

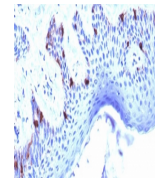
Human

Conjugation

Unconjugated

Tested Applications

ELISA, IHC-P, WB



IHC testing of human skin with Melanoma ...

Immunogen

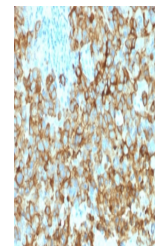
A portion of amino acids 376-502 from the human protein was used as the immunogen for the Melanoma gp100 antibody.

Preservatives

0.2 mg/ml in 1X PBS with 0.1 mg/ml rAlbumin (US sourced) and 0.05% sodium azide

Storage

Store the Melanoma gp100 antibody at 2-8°C (with azide) or aliquot and store at -20°C or colder (without azide).



IHC testing of human melanoma with Melan...

Note

For research use only

Application notes

Optimal dilution of the Melanoma gp100 antibody should be determined by the researcher.

Formula

0.2 mg/ml in 1X PBS with 0.1 mg/ml BSA (US sourced) and 0.05% sodium azide

Isotype

Mouse IgG1, kappa

Clonality

Monoclonal

Purity

Protein G affinity chromatography

Uniprot ID
P40967
Hazard Information

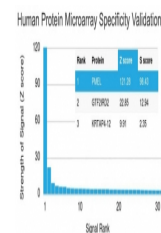
This Melanoma gp100 antibody is available for research use only.

Dilution Range

ELISA: 2-4ug/ml (order BSA/azide-free format), Immunohistochemistry (FFPE): 1-2ug/ml for 30 min at RT, Western blot: 1-2ug/ml

Expiration Date

12 months from date of receipt.



Analysis of HuProt (TM) microarray conta...