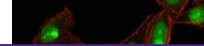

Product Datasheet

Nucleophosmin Antibody / NPM1 (orb606637)

Description

Recognizes a 33kDa glycoprotein, identified as



in...

Species/Host

Mouse

Reactivity

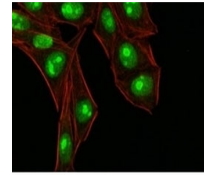
Human

Conjugation

Unconjugated

Tested Applications

FACS, IF, IHC-P



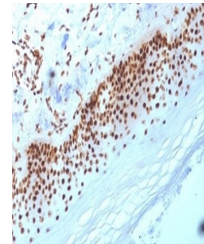
Immunofluorescent staining of human HeLa...

Immunogen

A GST fusion protein containing the N-terminal portion of Nucleophosmin fused to a 14 amino acid portion of ALK protein was used as the immunogen for the Nucleophosmin antibody.

Preservatives

0.2 mg/ml in 1X PBS with 0.1 mg/ml rAlbumin (US sourced) and 0.05% sodium azide



IHC testing of FFPE human skin with Nucl...

Storage

Store the Nucleophosmin antibody at 2-8°C (with azide) or aliquot and store at -20°C or colder (without azide).

Note

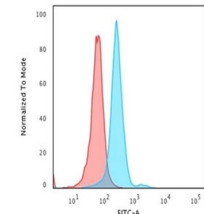
For research use only

Application notes

Optimal dilution of the Nucleophosmin antibody should be determined by the researcher.

Formula

0.2 mg/ml in 1X PBS with 0.1 mg/ml BSA (US sourced) and 0.05% sodium azide



Flow cytometry staining of PFA-fixed hum...

Isotype

Mouse IgG1, kappa

Clonality

Monoclonal

Purity

Protein G affinity chromatography

Uniprot ID

P06748

Hazard Information

This Nucleophosmin antibody is available for research use only.

Dilution Range

Immunohistochemistry (FFPE): 1-2ug/ml for 30 min at RT, Flow cytometry: 1-2ug/million cells, Immunofluorescence: 1-2ug/ml

Expiration Date

12 months from date of receipt.