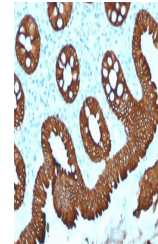


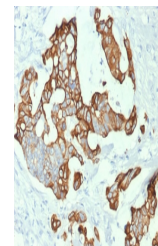
Product Datasheet

Cytokeratin 20 Antibody / CK20 (orb606635)

Description	This mAb recognizes an intermediate filament protein of 46kDa, identified as Cytokeratin 20 (KRT20, ...
Species/Host	Mouse
Reactivity	Human
Conjugation	Unconjugated
Tested Applications	IHC-P, WB
Immunogen	A portion of amino acids 196-323 from the human protein was used as the immunogen for this Cytokeratin 20 antibody.
Preservatives	0.2 mg/ml in 1X PBS with 0.1 mg/ml rAlbumin (US sourced) and 0.05% sodium azide
Storage	Store the Cytokeratin 20 antibody at 2-8°C (with azide) or aliquot and store at -20°C or colder (without azide).
Note	For research use only
Application notes	Optimal dilution of the Cytokeratin 20 antibody should be determined by the researcher.
Formula	0.2 mg/ml in 1X PBS with 0.1 mg/ml BSA (US sourced) and 0.05% sodium azide
Isotype	Mouse IgG2b, kappa
Clonality	Monoclonal
Purity	Protein G affinity chromatography
Uniprot ID	P35900
Hazard Information	This Cytokeratin 20 antibody is available for research use only.
Dilution Range	Western blot: 0.5ug/ml-2ug/ml, Immunohistochemistry (FFPE): 1-2ug/ml for 30 min at RT
Expiration Date	12 months from date of receipt.



IHC testing of human colon with Cytokera...



IHC testing of human colon carcinoma wit...



Western blot testing of human HT29 cell ...