

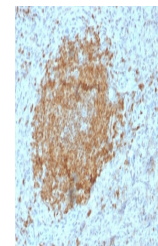
Product Datasheet

POU2AF1 Antibody / BOB-1 (orb606630)

Description	BOB1, also called POU2AF1, expression in a variety of established B-cell lines, representing differe...
Species/Host	Mouse
Reactivity	Human
Conjugation	Unconjugated
Tested Applications	IHC-P, WB
Immunogen	A portion of amino acids 148-255 from the human protein was used as the immunogen for the BOB1 antibody.
Preservatives	0.2 mg/ml in 1X PBS with 0.1 mg/ml rAlbumin (US sourced) and 0.05% sodium azide
Storage	Store the BOB1 antibody at 2-8°C (with azide) or aliquot and store at -20°C or colder (without azide).
Note	For research use only
Application notes	Optimal dilution of the BOB1 antibody should be determined by the researcher.
Formula	0.2 mg/ml in 1X PBS with 0.1 mg/ml BSA (US sourced) and 0.05% sodium azide
Isotype	Mouse IgG2b, kappa
Clonality	Monoclonal
Purity	Protein G affinity
Uniprot ID	Q16633
Hazard Information	This BOB1 antibody is available for research use only.
Dilution Range	Western blot: 1-2ug/ml, Immunohistochemistry (FFPE): 1-2ug/ml for 30 min at RT
Expiration Date	12 months from date of receipt.

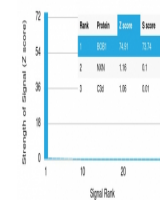


Western blot testing of human Raji cell ...



IHC testing of FFPE human spleen with BO...

Human Protein Microarray Specificity Validation



Analysis of HuProt (TM) microarray conta...