

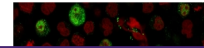
---

## Product Datasheet

### **POU2AF1 Antibody / BOB-1 (orb606629)**

**Description**

BOB-1, also called POU2AF1, expression in a variety of


**Species/Host**

Mouse

**Reactivity**

Human

**Conjugation**

Unconjugated

**Tested Applications**

FACS, IF, IHC-P, WB

**Immunogen**

A portion of amino acids 148-255 from the human protein was used as the immunogen for the BOB-1 antibody.

**Preservatives**

0.2 mg/ml in 1X PBS with 0.1 mg/ml rAlbumin (US sourced) and 0.05% sodium azide

**Storage**

Store the BOB-1 antibody at 2-8°C (with azide) or aliquot and store at -20°C or colder (without azide).

**Note**

For research use only

**Application notes**

Optimal dilution of the BOB-1 antibody should be determined by the researcher.

**Formula**

0.2 mg/ml in 1X PBS with 0.1 mg/ml BSA (US sourced) and 0.05% sodium azide

**Isotype**

Mouse IgG2b, kappa

**Clonality**

Monoclonal

**Purity**

Protein G affinity

**Uniprot ID**

[Q16633](#)

**Hazard Information**

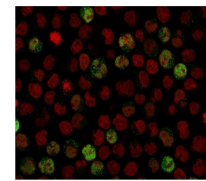
This BOB-1 antibody is available for research use only.

**Dilution Range**

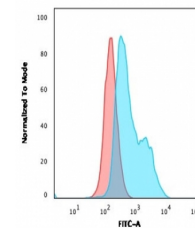
Flow cytometry: 1-2ug/ml, Immunofluorescence: 1-2ug/ml, Western blot: 1-2ug/ml, Immunohistochemistry (FFPE): 1-2ug/ml for 30 min at RT

**Expiration Date**

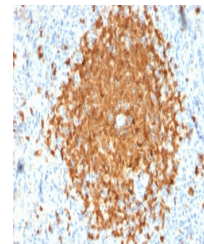
12 months from date of receipt.



Immunofluorescent staining of PFA-fixed ...



Flow cytometry testing of PFA-fixed huma...



IHC testing of FFPE human spleen with BO...