
Product Datasheet

SPTA1 Antibody / Spectrin alpha 1 (orb606619)

Description

Spectrin is an actin crosslinking and molecular scaffold

Species/Host

Mouse

Reactivity

Human

Conjugation

Unconjugated

Tested Applications

ELISA, WB

Immunogen

A portion of amino acids 356-475 from the human protein was used as the immunogen for the Spectrin alpha 1 antibody.

Preservatives

0.2 mg/ml in 1X PBS with 0.1 mg/ml rAlbumin (US sourced) and 0.05% sodium azide

Storage

Store the Spectrin alpha 1 antibody at 2-8°C (with azide) or aliquot and store at -20°C or colder (without azide).

Note

For research use only

Application notes

Optimal dilution of the Spectrin alpha 1 antibody should be determined by the researcher.

Formula

0.2 mg/ml in 1X PBS with 0.1 mg/ml BSA (US sourced) and 0.05% sodium azide

Isotype

Mouse IgG2b, kappa

Clonality

Monoclonal

Purity

Protein G affinity chromatography

Uniprot ID

P02549

Hazard Information

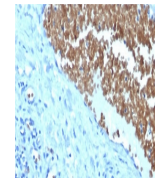
This Spectrin alpha 1 antibody is available for research use only.

Dilution Range

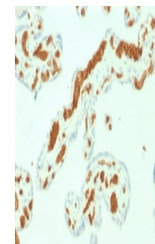
ELISA: 2-4ug/ml (order BSA/azide-free format), Western blot: 0.5-2ug/ml, Immunohistochemistry (FFPE): 1-2ug/ml for 30 min at RT

Expiration Date

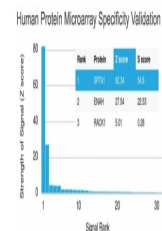
12 months from date of receipt.



IHC staining of FFPE human tonsil with S...



IHC staining of FFPE human placenta with...



Analysis of HuProt (TM) microarray conta...