

---

## Product Datasheet

### SPTA1 Antibody / Spectrin alpha 1 (orb606618)

**Description**

Spectrin is an actin crosslinking and molecular scaffold


**Species/Host**

Mouse

**Reactivity**

Human

**Conjugation**

Unconjugated

**Tested Applications**

ELISA, IHC-P

**Immunogen**

A portion of amino acids 356-475 from the human protein was used as the immunogen for the SPTA1 antibody.

**Preservatives**

0.2 mg/ml in 1X PBS with 0.1 mg/ml rAlbumin (US sourced) and 0.05% sodium azide

**Storage**

Store the SPTA1 antibody at 2-8°C (with azide) or aliquot and store at -20°C or colder (without azide).

**Note**

For research use only

**Application notes**

Optimal dilution of the SPTA1 antibody should be determined by the researcher.

**Formula**

0.2 mg/ml in 1X PBS with 0.1 mg/ml BSA (US sourced) and 0.05% sodium azide

**Isotype**

Mouse IgG2b, kappa

**Clonality**

Monoclonal

**Purity**

Protein G affinity chromatography

**Uniprot ID**

**P02549**

**Hazard Information**

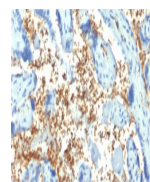
This SPTA1 antibody is available for research use only.

**Dilution Range**

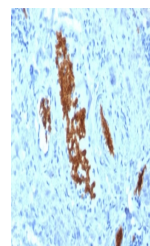
ELISA: 2-4ug/ml (order BSA/azide-free format), Immunohistochemistry (FFPE): 1-2ug/ml for 30 min at RT

**Expiration Date**

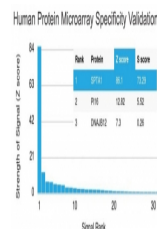
12 months from date of receipt.



IHC staining of FFPE human placenta with...



IHC staining of FFPE human tonsil with S...



Analysis of HuProt (TM) microarray conta...