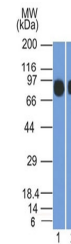


Product Datasheet

CD10 Antibody / Neprilysin (orb606614)

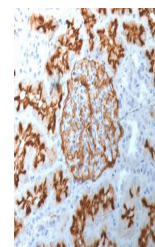
| | |
|----------------------------|---|
| Description | CD10, also known as Common Acute Lymphocytic Leukemia Antigen (CALLA) and Neprilysin, is a cell surf... |
| Species/Host | Mouse |
| Reactivity | Human |
| Conjugation | Unconjugated |
| Tested Applications | ELISA, IHC-P, WB |
| Immunogen | A portion of amino acids 297-483 from the human protein was used as the immunogen for the CD10 antibody. |
| Preservatives | 0.2 mg/ml in 1X PBS with 0.1 mg/ml rAlbumin (US sourced) and 0.05% sodium azide |
| Storage | Store the CD10 antibody at 2-8°C (with azide) or aliquot and store at -20°C or colder (without azide). |
| Note | For research use only |
| Application notes | Optimal dilution of the CD10 antibody should be determined by the researcher. |
| Formula | 0.2 mg/ml in 1X PBS with 0.1 mg/ml BSA (US sourced) and 0.05% sodium azide |
| Isotype | Mouse IgG2c, kappa |
| Clonality | Monoclonal |
| Purity | Protein G affinity chromatography |
| Uniprot ID | P08473 |
| Hazard Information | This CD10 antibody is available for research use only. |
| Dilution Range | ELISA: 2-4ug/ml (order BSA/azide-free format),Western blot: 1-2ug/ml,Immunohistochemistry (FFPE): 1-2ug/ml for 30 min at RT |
| Expiration Date | 12 months from date of receipt. |



Western blot testing of human 1) Raji an...



Western blot testing of human kidney lys...



IHC staining of FFPE human kidney with C...