

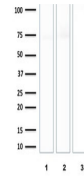
---

## Product Datasheet

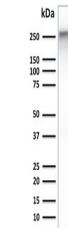
### SPTBN2 Antibody / Spectrin beta III (orb606613)

**Description**

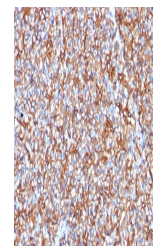
Spectrin is an actin binding protein that is a major



Western blot testing of human 1) HeLa, 2...



Western blot testing of human PANC-1 cel...



IHC testing of FFPE human pancreas with ...

**Species/Host**

Mouse

**Reactivity**

Human

**Conjugation**

Unconjugated

**Tested Applications**

IF, IHC-P, WB

**Immunogen**

Human recombinant partial protein corresponding to amino acids 356-475 was used as the immunogen for this Spectrin beta III antibody.

**Preservatives**

0.2 mg/ml in 1X PBS with 0.1 mg/ml rAlbumin (US sourced) and 0.05% sodium azide

**Storage**

Store the Spectrin beta III antibody at 2-8°C (with azide) or aliquot and store at -20°C or colder (without azide).

**Note**

For research use only

**Application notes**

The concentration stated for each application is a general starting point. Variations in protocols, secondaries and substrates may require the Spectrin beta III antibody to be titrated up or down for optimal performance.

**Formula**

0.2 mg/ml in 1X PBS with 0.1 mg/ml BSA (US sourced) and 0.05% sodium azide

**Isotype**

Mouse IgG1, kappa

**Clonality**

Monoclonal

**Purity**

Protein G affinity chromatography

**Uniprot ID**

**015020**

**Hazard Information**

This Spectrin beta III antibody is available for research use only.

**Entrez**

**6712**

**Dilution Range**

Western blot: 1-2ug/ml, Immunofluorescence: 1-2ug/ml, Immunohistochemistry (FFPE): 1-2ug/ml for 30 min at RT

**Expiration Date**

12 months from date of receipt.